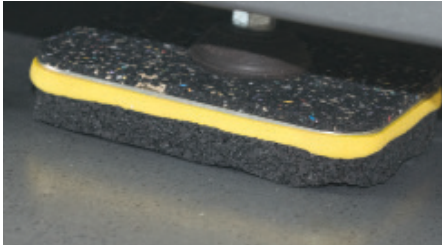


PATENTS: US 8,113,495 CA 2,505,938



GenieMat TMIP are a mix of vibration isolators made from a superior combination of vibration damping materials.

By combining ultra high performance elastomers with bearing plates, outstanding vibration isolation values are achieved for the most problematic equipment.

Vibration pads are available for any treadmill application. Vibration isolation efficiencies up to 99% and over 40dB noise reduction are commonly achieved, eliminating noise transfer into other areas.

PRODUCT DATA

STANDARD THICKNESS:	50.8 mm (2")
STANDARD SIZES:	127 mm x 177.8 mm - Rear mounts, 127 mm x 457.2 mm - Front mounts (5" x 7" - Rear mounts, 5" x 18" - Front mounts)
STATIC DEFLECTION:	Lightweight case: 45.4 kg (100 lb) user 1.46 psi deflection 1 to 2 cm Heavyweight case: 136.1 kg (300 lb) user 2.76 psi deflection 2 to 3 cm
WATER, PETROLEUM, ALKALI AND FUEL RESISTANCE	Excellent

The Treadmill Isolation Pads are inherently non-slip. The pads are sold by the set and a set consists of 2 front and 2 rear pads. For other special applications please consult us.

APPLICATION GUIDELINES



Place one pad under each of the four treadmill feet. The floor under the treadmill should be clean and free of debris and all machine cords should have some free play.

Ensure the front pads are installed in the front and the rear pads are installed at the back of the unit. Lift the equipment according to the manufacturer's specifications and use proper safety procedures.

Lower the treadmill into place and ensure that the foot is centered on the mounts. Please note that even deflection occurred.

Pliteq will be more than happy to provide initial, no-charge, telephone, preinstallation consultation.

CONTACT US

For Your Project Specific Questions

AUS +61 39018 7696 | **Asia Pacific** +65 8452 6865 | **Middle East** +971 4 813 5501
E. info@pliteq.com.au



© Pliteq Asia Pacific Pte LTD. 2021.

The information provided is accurate to the best of our knowledge at the time of issue. However, we reserve the right to make changes when necessary without further notification. Suggested application may need to be modified to conform with local building codes and conditions. We cannot accept responsibility for products that are not used, or installed, to our specifications. All listed dimensions are nominal.

www.pliteq.com.au